



GAT MONTHLY MEMBERSHIP PROGRESS REPORT

Results as of: 5/31/2022

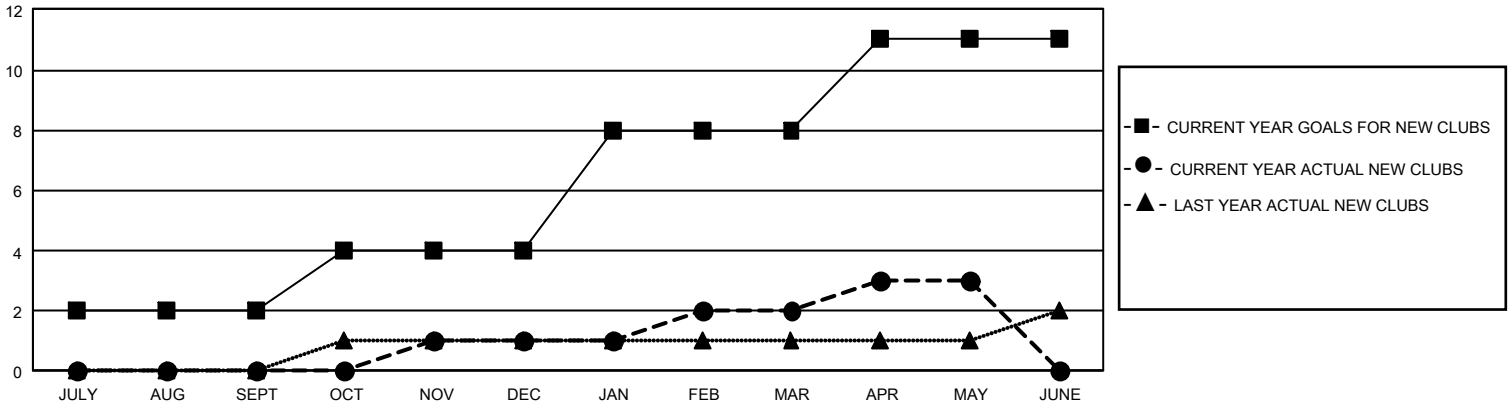
GMT Constitutional Area 5 - J, Group J

REPORT DOES NOT INCLUDE CLUBS IN UNDISTRICTED AREAS.

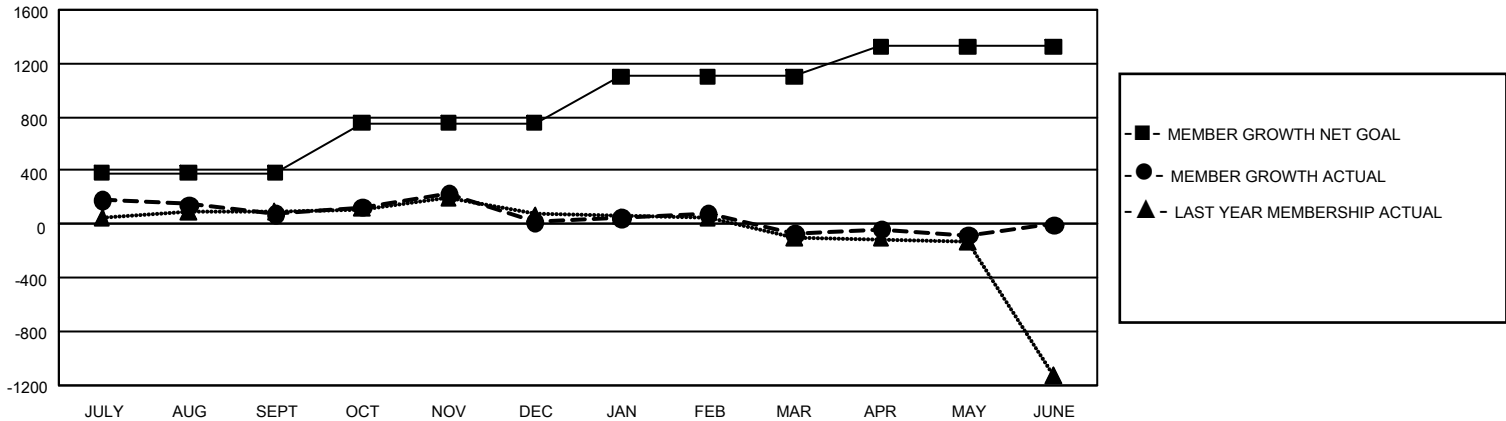
Clubs			
RESULTS FOR 2021-2022			
QUARTER	NEW CLUB GOAL	NEW CLUBS	DROPPED CLUBS
JULY/AUG/SEPT	6	0	0
OCT/NOV/DEC	6	1	2
JAN/FEB/MAR	12	1	2
APR/MAY/JUNE	9	1	2

Members			
RESULTS FOR 2021-2022			
QUARTER	MEMBER GROWTH NET GOAL	MEMBER GROWTH ACTUAL	DROPPED MEMBERS ACTUAL (including transfers)
JULY/AUG/SEPT	381	583	463
OCT/NOV/DEC	375	460	508
JAN/FEB/MAR	345	394	459
APR/MAY/JUNE	225	360	356

GOALS AND ACTUAL NEW CLUBS CUMULATIVE



GOALS AND ACTUAL MEMBERS CUMULATIVE



DROPPED CLUBS: 6	541 CLUBS OF 772 ADDED 1 OR MORE NEW MEMBERS	<u>GENDER DISTRIBUTION</u>	
		MALE 21,799 (78.84%) FEMALE 5,848 (21.15%) NON BINARY 0 (0.00%) PREFER NOT TO ANSWER 4 (0.01%)	
<u>DROPPED MEMBERS</u>		CLICK HERE FOR CUMULATIVE MEMBERSHIP DATA	TOTAL FAMILY UNIT MEMBERS 7,447
DECEASED 212 CLUB CANCELLED 18 OTHER 1,556 TOTAL 1,786			FAMILY MEMBERS PAYING HALF DUES 4,078